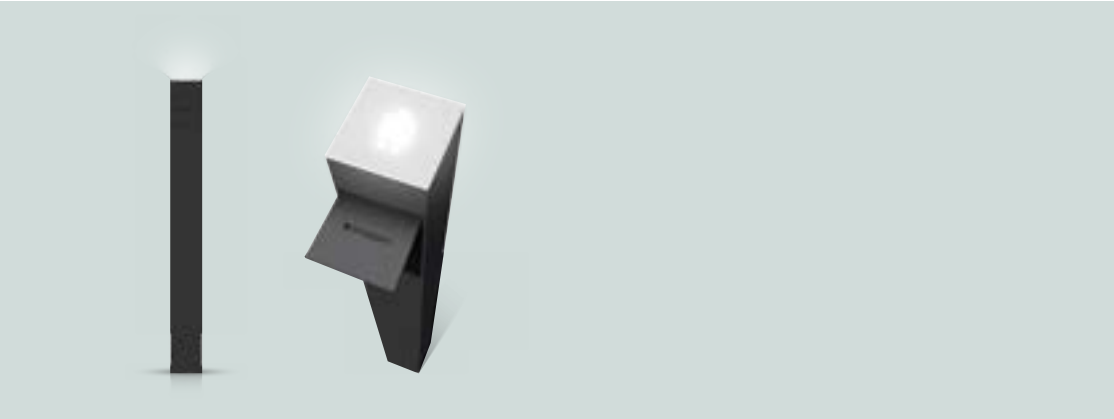


Smappee EV One HOME



- Integrated local autonomous overload protection and solar optimisation.
- Insights and control over charging process and costs.
- Real-time and historical energy data - grid, solar, always-on.
- Control charging sessions with QR code, RFID and smart schedules.
- Easily expandable with Smappee Infinity for more home energy management.
- Secure OCPP and OCPP roaming.

The Smappee EV One Home is a floor-mounted smart EV charging station with one connector, for standalone use at home. Thanks to the integrated Smappee Infinity technology it ensures autonomous overload protection and optimised self-consumption. Receive detailed insights on your energy usage and production, the charging process and costs via the App and Dashboard. The EV One Home is easy to install with simple cable configuration and installation wizard. The integrated LED lighting indicates charging status. Charging sessions can be started and stopped via QR code, RFID and smart EV schedules.

Dimensions:

1100 × 120 × 120 mm

Weight:

- EV One with 1 socket: 11 kg
- Mounting anchor: 1.5 kg

Operating temperature:

-25 °C to 40 °C

Storage temperature:

-25 °C to 60 °C

Relative humidity:

0 % - 95 %, non-condensing

Operating altitude:

0 - 2,000 m

Standards:

IEC 61851-1

Product certifications:

CE

Connectivity:

- Wi-Fi 2.4 GHz
- Ethernet 100BASE-T

Communication protocol:

OCPP 1.6 J, ready for update to OCPP 2.0.1

Mounting method:

Floor

Enclosure:

- Material: Magnelis (structure), aluminium (housing)
- Rating: IP54 / IK10
- Standard colour: RAL7021 (black grey)

Integrated Residual Current Protection:

6 mA DC / 30 mA RCD type A

Required external protection:

Breaker of max. 40 A, type B or C

Integrated Energy Management:

Grid & solar measurements

Charging:

- Maximum charging capacity: 22 kW
- Output power: 3 phase, 230 V/400 V, 32 A
- Charge mode: Mode 3 (IEC 61851)
- Charging activation: QR code / Plug and charge / RFID
- Information status: RGB LED
- kWh meter compliant with IEC 62053-21

Connectors:

1 × type 2 socket